

Vettec Transitions to 210ml Cartridges

Vettec has transitioned from a 160ml cartridge to a 210ml cartridge. The 210ml cartridge will require a different applicator than the current 160ml applicator and the tips will also be different. Tips for the 210ml applicator will be in both 10 pc and 25 pc packs. *Sil-Pak will be delayed in this transition and is currently staying in 160cc.*



Vettec 210ml Cartridge Video

Watch Vettec's Larkin Greene at FPD's FootPro Shop demonstrating the new Vettec 210ml cartridges.

Watch this video and subscribe to FPD's YouTube Channel >>
www.youtube.com/farrierproducts

Diamond 210ml Cartridge Applicator Gun Available

The new Diamond 210ml Cartridge Applicator Gun fits cartridges in 200 and 210ml varieties. The applicator gun weighs up to 1/2 lb. less than other guns and will work with the new Vettec Cartridges.

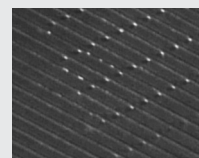


JUST A REMINDER

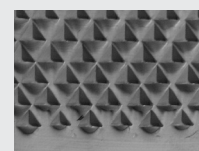


New Bellota Prime Level Rasp

The new Bellota Prime Level complements the Top Level rasp, providing the same wider, thinner model and aggressive rasp side with a new "chip breaker" file side. Packed 6 to a box and 24 to a case.



PRIME LEVEL FILE SIDE



PRIME LEVEL RASP SIDE

FEATURES

- Aggressive rasp side (8 teeth/row) ideal for trimming
- 12% wider (2" wide) and 10% thinner than regular rasps perfect for leveling balance and control
- Chip breaker file side creates smoother finish of the outer wall
- Same weight as regular rasp models
- High grade steel
- Rasp tooth designed for smooth precise cutting
- Heat treated to hold edge

Find dealers carrying this product on FPD's Dealer Locator at www.farrierproducts.com/locations.

THE TOOL CORNER

TOOL TIPS

By Roy Bloom, CJF APF-I



1. ALWAYS WEAR YOUR SAFETY GLASSES

You are striking steel against steel and working with hot material. Anything can happen, so be safe.

2. ALWAYS STRIKE THE TOOL IN THE CENTER OF THE STRIKING SURFACE

Striking off center or on the edge will cause breakage and possible injury.

3. ALWAYS STRIKE THE TOOL WITH THE ROUND FACE OF YOUR HAMMER

Striking with the flat face causes deflection off the rounded surface of the tool. The round face of your hammer produces a solid hit.

4. ALWAYS PRITCHEL AT A BLACK HEAT

This allows you to shear the material and avoid heat buildup in the pritchel. You will get much longer life from your pritchel and better nail holes.

5. ALWAYS MAINTAIN YOUR TOOLS

If your tool should mushroom on the struck end, grind off the mushroomed area. If the working end should deform for any reason, regrind to the proper size and shape. Do not overheat.

6. NEVER LET THE WORKING END OF YOUR TOOL GET TOO HOT

Allowing your tools to remain in hot material too long will create a heat buildup in the working end of the tool that will destroy the heat treat and hardness of the tool. The result will be deformed working ends. This is especially critical with the forepunch and drift.

7. NEVER PUT THE TOOLS IN THE FIRE TO ADJUST THEM

Excessive heat will destroy the heat treating and render the tool useless. Excessive heat will also destroy the weld on some tools and cause the weld to crack. (An exception would be tong adjustment and pritchels which can take some heat)

8. NEVER QUENCH YOUR TOOLS IN WATER

If your tools get hot they should be allowed to air cool. In normal work we recommend that you dip your tools in Forshners Hoof Packing to provide cooling and lubrication.

9. NEVER QUENCH YOUR TONGS IN WATER

If you make adjustments to your tongs do not quench them. Allow them to air cool before you use them. In normal work, you can quench them in water provided there is no color in the tong.

1. This steel handled bob punch needs immediate dressing of the struck end. Never let your tool reach this stage before dressing. Notice the missing pieces. You'll need a full suit of armor to protect yourself if you let your tools get to this point! **2.** From struck end you can see again the dangerous situation that has developed and needs immediate attention. The struck ends of these tools are softer to avoid damage to your hammers, but must be dressed on a regular basis. **3.** This punch has been in hot material for too long, resulting in the heavy coloration seen here. Get your tools in and out of the material quickly and don't allow this kind of heat buildup. The damage that results is because of misuse, not because the tool is defective.

