

# The Natural Angle

VOLUME 17: ISSUE 4

THIS NEWSLETTER PUBLISHED FOR KEN DAVIS & SONS, INC.

## Educational and Training Benefits of AFA Certification

*The American Farrier's Association held its first official certification in 1981 in west Texas. The certification program rapidly developed into the most consistent and significant educational and training opportunity in the North American farrier trade, with thousands of farriers participating in the 38+ years since its inception.*

From the most basic level to the more advanced endorsements, the program has motivated and encouraged farriers to “up their game” and improve their skills.

FPD recognizes the importance and value of what the AFA Certification Program has done for the industry and we will share a few articles detailing some aspects of the program. We encourage you to visit the AFA website for complete information, and just ask around your neighborhood; you are very likely to find a number of AFA certified farriers that will attest to the benefits of stepping up to the challenge.



*Certification Participants in Utah - 1982*



*Hank Chisholm at Tennessee Pre-Certification Clinic*



### Prepare and Practice for Certification

Hank Chisholm, CJF is the chairman of the AFA Pre-Certification Committee and recently came to FPD's FootPro Shop in Shelbyville, KY to provide information for our feature article. Hank believes attendance at a Pre-Certification program, while not a requirement, is highly recommended. Success in testing increases dramatically for individuals that attend at least one Pre-Certification program. The AFA posts Pre-Certification and Certification dates and locations on the website and regularly updates them with e-blasts to members. This article touches on Horseshoe Display requirements that are part of the practical section for Certified Farrier (CF) status and are also part of the Farrier Classification (FC) test. While the article is not intended to be a complete guide to preparing a shoe display for certification, we hope it will provide useful information and visuals to help understand what is involved. We urge you to visit the AFA website for complete details of the requirements and to locate resources and pre-certification clinic and certification dates should you choose to get involved in the program.



*Checking fit on certification shoe*



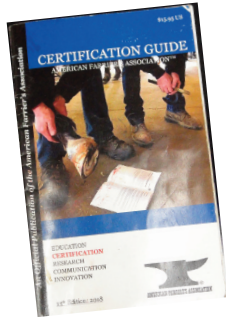
Continued on page 2



Continued from page 1

## Horseshoe Display Guidelines

The AFA guidelines for all aspects of certification are available online with specific links located at: [americanfarriers.org/page/certification](http://americanfarriers.org/page/certification). The guidelines are also available in booklet form “Certification Guide” available for purchase on the AFA site.



Hank stresses the importance of following the guidelines. The certification test is not a mandate or blueprint on how to shoe any individual horse. Rather, it is an objective assessment of the specific skills necessary to perform the job of farriery to a prescribed standard. Testers and examiners have been trained to follow the guidelines and leave opinions out of the process.

## General Guidelines For All Shoes

1. Every shoe modification must be flat, have proper nail placement and fit, have a smooth finish with no sharp edges, extensions are to be boxed, stock width and/or thickness should be maintained.



2. A shoe may have more than one modification but must be useable. Candidates may be asked to defend the appropriateness and functionality of any shoe submitted.



3. All displays incorporate both front and hind pattern shoes and all front or hind shoes are made for the same front or hind pattern. Patterns can be purchased from the AFA. Patterns do not have to be “AFA Patterns” but must conform to the standards listed in the Certification Guide.



4. An appropriate nail (or nails) must be included with the display.

Continued on page 3

## DIAMOND TRACKER

### One Shoe, Countless Shapes

- High grade steel for longer wear and strength
- V-crease provides secure nail fit with more nail size options
- Generic pattern easily shaped into front or hind pattern
- Steep bevel at the toe provides built-in breakover and traction



Find more photos, videos and specifications online at [farrierproducts.com](http://farrierproducts.com)



Continued from page 2

## Required modifications:

### SQUARE TOE ▼



### ROLLED TOE ▼



### SHOE TO RAISE HOOF ANGLE ▼



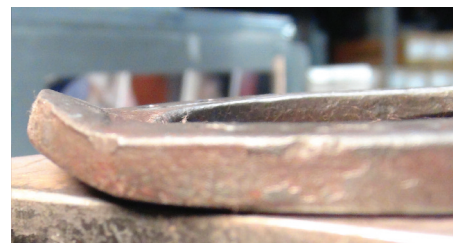
### HIND SHOE WITH EXTENDED HEELS ▼



### CLIPS: TOE AND QUARTER ▼



### ROCKER TOE ▼



Continued on page 4



NEW FROM BELLOTA

# PRIME LEVEL RASP

FEATURING A CHIP BREAKER FILE SIDE  
FOR SMOOTHER OUTER WALL FINISH



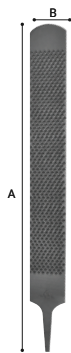
With the most advanced research, production, controls and testing, Bellota is able to deliver the best performing rasps in the industry. The newest addition to the Bellota Rasp line is the **Bellota Prime Level** - a perfect complement to the Bellota Top Level.

▲ "Chip breaker" style file side for smoother finish of the outer wall

▲ Aggressive rasp side (8 teeth/row) for easy cut, ideal for trimming

▲ 12% wider (2" wide) and 10% thinner than regular rasps for perfect leveling balance and control

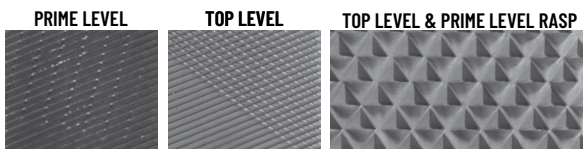
▲ Same weight as regular rasp models



**PRIME LEVEL  
AGGRESSIVE RASP  
& CHIP BREAKER FILE**

lbs.	A in.	B in.
1.4	14	2

COMPARE TO TOP LEVEL FILE SIDE



ALSO TRY THESE GREAT RASPS



**TOP LEVEL**  
AGGRESSIVE RASP &  
INTERMEDIATE FILE

**TOP SHARP**  
VERY AGGRESSIVE RASP  
& INTERMEDIATE FILE

**RAZOR PLUS**  
MOST AGGRESSIVE RASP  
& COARSE FILE



**BELLOTA**  
HARD WORK INSPIRED

Watch a video of the new Bellota Prime Level in action on FPD's YouTube Channel @farrierproducts!



Continued from page 3

SHOE WITH PAD (finished as if on hoof) ▼



TWO TYPES OF TRACTION DEVICES ▼



Continued on page 5



Continued from page 4

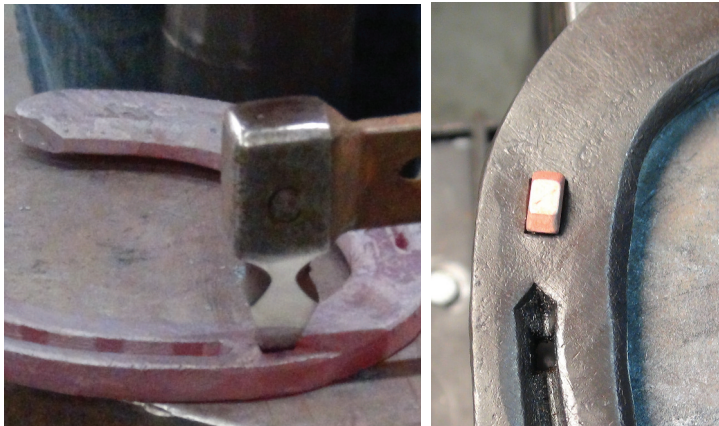
## STRAIGHT BAR ▼



## TRAILER



## PUNCHED NAIL HOLE ▼



The Pre-Certification Committee has been posting “how-to” videos for many of the shoe display modifications on their Facebook group page: American Farrier’s Association Precertification Program. This is an open group. FPD will also post videos to Facebook and YouTube to help support the effort.

## Top Tips For Making Your Shoe Display

1. Practice, Practice, Practice
2. Attend a Pre-Certification
3. Study the Certification Guide - they will be judging all your shoes by the book!
  - a. *Fit* – this relates to the fit of the shoe from the widest part forward.
  - b. *Length and Expansion* – your heels and heel quarters need to be spot-on.
  - c. *Finish* - do all the necessary boxing, heel finish, removal of sharp edges and clean the shoes up. All work, other than one shoe at the certification, should be done in advance and you can use power equipment as needed. Have the necessary tools to make and finish the shoe you are asked to make at the certification. Hot rasping, filing and use of sandbox tools is allowed.
  - d. *Nail fit* - check every nail hole, especially on those modifications like the square toe. Bring the appropriate nails for judging nail fit in your shoes.
  - e. *Flat and Level* - every shoe is required to be flat and level.
  - f. Use shoes that have adequate material for your modifications and offer the best fit with least work for your patterns. The Kerckhaert Standard Max is becoming a favorite option for many.

## Your Work Demands Versatility

### THE KERCKHAERT STANDARD MAX DELIVERS

Additional thickness and width in comparison to the Standard. Good shoe for modifications, ranch and trail work. Best nail choice - Liberty 5 Slim and 5 City.

- Full toe, balanced for the stock width
- V-crease allows appropriate nail choice for hoof and horse size
- Easily modified to front or hind pattern



KERCKHAERT



TOOL TIPS

# NECESSARY ITEMS FOR THE WORKING FARRIER'S TRUCK

by Sammy L. Williams, Mexico, MO

As of June, 2019, I have shod horses professionally for 56 years! I am primarily a Saddlebred farrier but have filled in with Morgans, Arabians, and various other breeds and disciplines in order to keep a full work schedule close to home. I have appreciated reading *The Natural Angle*, which provides good information, techniques, and processes that are important for my profession. However, I do not recall reading the detail of equipment a full-service professional farrier needs to bring to every job he/she does. To be successful it is essential to be well equipped.

First, I use a Ford 250 with a custom camper shell, dedicated only



to my business. My own design of shelves and cubbyholes within the camper shell makes it easy for me to reach and use every piece of equipment necessary, without the expense of a trailer or larger/more complex rig. Everything in the

truck is fastened down or arranged to prevent movement in transit on sometimes rough roads. The payload of my truck is about 2,000 pounds of supplies and tools. The reason I carry and have listed certain items is that most barns

Continued on page 7

210 CC'S OF

# BIGGER. BETTER. EASIER.

**Vettec**  
ANIMAL HEALTH

You asked, we listened. The new Vettec cartridge holds 30% more material and is easier to open and dispense. Contact us today and see for yourself why Vettec is still the most trusted brand in hoof care.

800-483-8832 | [www.vettec.com](http://www.vettec.com)



### Continued from page 6

never have more than a hammer or screw driver around the place. Some may find it unusual that I carry some electrical supplies. I do that in case I have to replace a receptacle to keep my fan(s) going during hot summer months. I also have a light switch for lights in the shoeing area. Wire nuts are sometimes needed to cap off electrical wires until an electrician can fix them properly; this can help prevent barn fires.

I carry and use fly spray in the truck so I do not spread flies from one barn to another. If there are sick horses in a barn, I use disinfectant on my safety shoes, tools, and apron before going to any other barn. I wash my hands and change clothes before even feeding my horses at home. I carry Copper rivets not only to secure pads to horseshoes, but as a handy everyday fix for halters and nameplates as well as other stable leather equipment. I carry an assortment of bolts because I've found that a bolt here and there can repair a manure spreader, wheelbarrow, jog cart, tractor, to name a few. Being able to fix some of these things can clear the area for us to get the shoeing done, and is really great Public Relations on a minimal budget!

## USEFUL ITEMS FOR YOUR TRUCK

### FOR PERSONAL SURVIVAL AND COMFORT:

- Change of clothes
- Wintertime extra clothes including coat, coveralls, sweatshirt
- Gloves (for warmth and for protection while working)
- Socks
- Paper and cloth towels
- Band aids (cotton cloth)
- Bulk sterile cotton
- Vet wrap
- Antibiotic cream
- Hydrogen peroxide
- Hand soap
- Benadryl for sudden allergies
- Aspirin/Tylenol

### FOR HORSE SAFETY AND HEALTH:

- Turpentine
- Copper sulfate, FootPro CS+
- Spray disinfectant
- Canister mosquito and fly spray
- Soap

### TRUCK REQUIREMENTS TO GET TO THE JOB AND GET HOME:

- Mechanic tools with an assortment of bolts and screws
- Tire chains year-round
- Log chain
- Jumper cables
- 3 to 5 ton hydraulic jack

### FOR SETUP IN THE STABLES:

- More assorted bolts and screws
- Light switch
- 1 plug-in receptacle
- Copper rivets and nails
- Wire nuts
- Electrical connectors
- Electric fan
- 2 extension cords – preferably 12 or 10 gauge

### SUPPLIES FOR ACTUAL SHOEING:

- 2 drills with assorted drill bits
- Pine tar
- Oakum

- Forshner's Hoof Packing
- Equi-Pack Soft - Vettec
- Reducine
- Venice turpentine
- Nails, Sizes 4.5 to 16
- Various other types of nails
- All appropriate shoes and sizes for the disciplines you shoe
- Specialty shoe types to have on hand include Saddlebred, Morgan, Arab, plus random keg shoes in various sizes
- Leather pads
- Plastic wedges
- Frog pressure pads
- "Pink stuff" latex
- WD-40 and a light oil
- 6" Bellota file (for keeping hoof knife sharp)
- Shoeing box full of tools
- Forge
- Extra/spare/replacement tools
- Anvil and bench
- Hoof stands
- Oxygen and acetylene torch

THE NATURAL ANGLE is published to provide you with new and useful information about the industry. It is published through a cooperative effort of FPD, Kerckhaert Horseshoes, Liberty Horseshoe Nails, Bellota, Bloom Forge, Vettec and your supplier.

Articles in this publication are the property of *The Natural Angle* and cannot be reprinted without express permission. For information concerning reprints, please contact Dan Burke, FPD, P.O. Box 1328, Shelbyville, KY 40066 or Email: [fpd@farrierproducts.com](mailto:fpd@farrierproducts.com).

If you have questions, comments or ideas concerning the articles published in the Natural Angle, please contact your distributor. We welcome your input. *The Natural Angle* is designed and edited by Graphic Response. ■



# Choose Quality Products from Ken Davis and Sons, Inc. to Get Your Work Done Efficiently and Economically

## KERCKHAERT DF SELECT

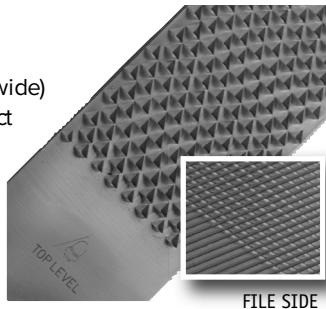
**SIZES: 8MM HIND SC - 0 & 1 (20X8), 2, 3 (22X8)  
AND 10MM HIND SC - 0 (20X10), 1 (21X10), 2 AND  
3 (22X10), 4, 5 (25X10)**

Specifically designed for the hunter jumper market where additional support is required. Heels are elongated and tapered. Widest part of shoe is moved forward, allowing an "extended" heel fit. Punched for E-head.



## BELLOTA TOP LEVEL RASP

The Bellota Top Level rasp is 12% wider (2" wide) and 10% thinner than regular rasps for perfect leveling balance and control. New aggressive rasp side (8 teeth/row) for easy cut, ideal for trimming and intermediate file side for excellent and efficient finish. Same weight as regular rasp models.



**SAVE THE DATE  
FOR THE 2020  
KEN DAVIS & SONS, INC.  
FARRIER CLINIC  
March 20 & 21, 2020**

**KEN DAVIS  
&  
SONS, Inc.**

**We have what you want -  
When you want it.**

- Knowledgeable Staff
- Competitive Prices
- Quality Farrier Products
- Same Day Shipping

*Call for a Free Catalog*



**1-800-421-3109 • ken-davis.com**

FIRST CLASS  
U.S. POSTAGE  
**PAID**  
HAGERSTOWN, MD 21740  
PERMIT NO. 184

Ken Davis & Sons, Inc.  
367 East Blagrove Street  
Richwood, OH 43344  
Return Service Requested