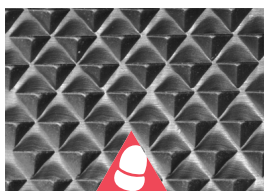


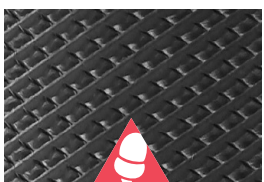
NEWS FOR FARRIERS

Bellota RAZOR+ Rasp

The rasp side of the Bellota RAZOR+ offers a most aggressive cut, with a larger tooth design when compared to other Bellota rasps. In addition, special steel characteristics combined for the longest durability.



**MOST AGGRESSIVE
RASP SIDE**



**COARSE
FILE SIDE**

WHAT PROFESSIONAL FARRIERS ARE SAYING ABOUT THE BELLOTA RAZOR+

"I've been using the Razor Plus now and I get many more horses out of each rasp. They are an awesome rasp on dry hard feet and speed you up with less effort. Great product!"

- Rick Denning, Florida

For more information on Bellota rasps, visit bellotafarrier.com.

November 2022 Facebook 20+2 Giveaway Drawing

The November Facebook Giveaway will be (1) each of the Top Level Long and the BIG RAPTOR+ rasps for two winners. Twenty winners will receive (1) Top Level Long rasp. Look for posts on FPD's facebook page to register for a chance to win the monthly free give-away. This giveaway is only valid in the U.S. and Canada.



**20+2
GIVEAWAY
DRAWING**

DEADLINE TO ENTER 11/30/22. No purchase necessary. 22 names will be drawn 12/1/22, only valid in the U.S. and Canada. FPD, Inc. and Diamond Farrier Co. Employees and Dealers not eligible to win.

FPD
FARRIER PRODUCT
DISTRIBUTION
november

20 WINNERS RECEIVE
(1) Top Level Long Rasp

**PLUS PACKAGE
2 WINNERS RECEIVE**
(1) Top Level Long Rasp
(1) Big Raptor+ Rasp

JUST A REMINDER

FootPro™ DIM is the Only Impression Material You Need

EASY TO MIX AND APPLY | SOFT AND FIRM VERSIONS | GREAT RESULTS

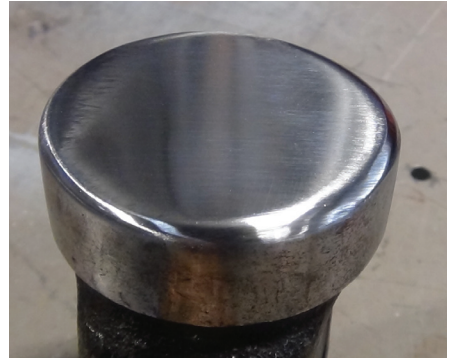
"I'm switching to FootPro™ DIM."

- Michael Moran

FootPro™ DIM is non-toxic, non-allergenic, dental grade silicone that is hand mixed to a moldable consistency and applied to the bottom of the equine foot with a pad to provide either a soft cushion (DIM20), or a firm supportive material (DIM40) when needed. Each box contains a total of either 4 lbs. or 2 lbs. (Equal Parts Catalyst and Base).

Find FPD dealers carrying FootPro™ DIM and other products at farrierproducts.com/locations.





TOOL TIPS

Maintaining your Hammer and Struck Tools

By Roy Bloom, APF CJF

AS SEEN
ON FPD'S
BLOG

THERE ARE A LOT OF FORGING HAMMERS IN THE MARKET AND JUST AS MANY IDEAS AS TO HOW HARD THEY SHOULD BE.

I have always held that the hammer hardness should not be more than the struck tool. The first reason is related to safety. A hammer that has an extremely hard heat treat level is more likely to chip or cause a problem with the struck tool or anvil if there is any kind of miss or errant blow. Secondly, because of the mass of the hammer in relation to the struck tool, damage to the tool is more likely. You will spend more money and time

maintaining your struck tools if the hammer is extremely hard. In the end, this will cost you more than the occasional maintenance of your hammer if it is approximately the same hardness as the struck tools.

A hammer requires regular maintenance. If you don't dress the face and edges regularly, you can end up with "dings" to the face that will mark the material you are working. Any deformation of the edges of the hammer can develop into a mushrooming area that is at risk of chipping or fracturing-creating a safety issue and also making it more difficult to maintain.

Pay close attention to your hammer faces and edges as well as the struck end of your top tools. If you see any indication of marking, mushrooming or other blemishes developing you can dress these using a grinder with a fine grit belt- something in the neighborhood of 100-120 grit will work well. When dressing the hammer or tools be careful not to create enough heat to bring color to the tool. This can destroy the heat treat of the tool and is very difficult to repair.